



3 Ashfield Road
Hasland, Chesterfield, S41 0AZ
£155,000

 2  1  2  D

3 Ashfield Road

Hasland, Chesterfield, S41 0AZ

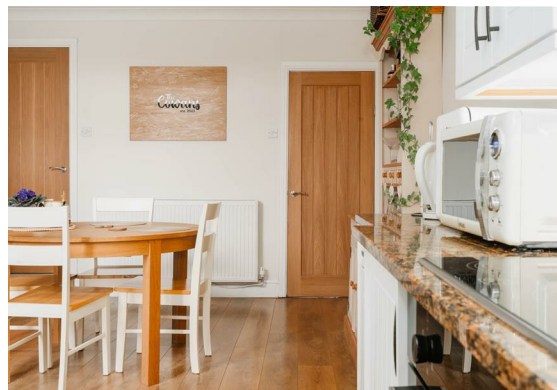
A beautifully styled, deceptively spacious and practically set-out 2 bedroom mid terrace property, located in the popular Chesterfield suburb of Hasland, perfectly suited to a first time buyer wanting the ideal home to just move in. Offering a spacious 828 sqft of accommodation over 2 storeys, the property features a snug lounge, a modern kitchen with integrated oven and granite worktops, an open plan living and dining space leading off the kitchen, 2 very generously sized bedrooms and a modern bathroom with bath and shower.

The property has on-road parking, and to the rear features a private landscaped garden with patio and lawn area.

The ground floor comprises; modern kitchen with integrated oven, electric hob, dishwasher, washing machine, fridge freezer and granite worktops, open plan living and dining space leading off the kitchen with electric fire, family lounge with gas fire.

The first floor comprises; a stylish bathroom with bath and overhead shower, 2 good sized double bedrooms.

**Dales & Peaks ForwardMove
please read**





Floor Plan

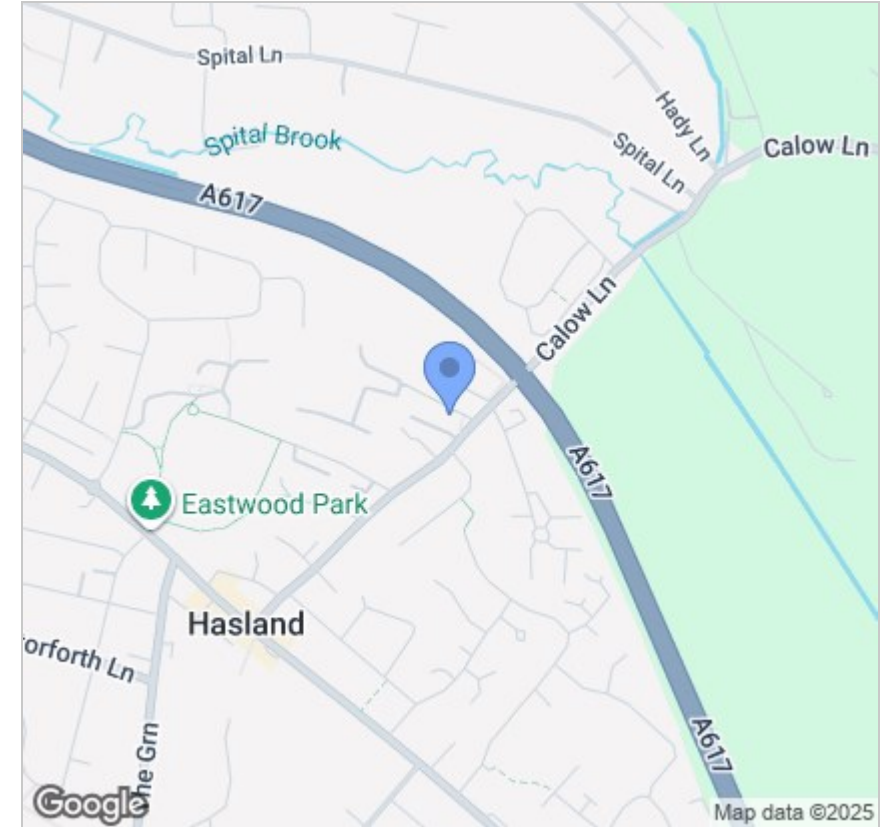


Viewing

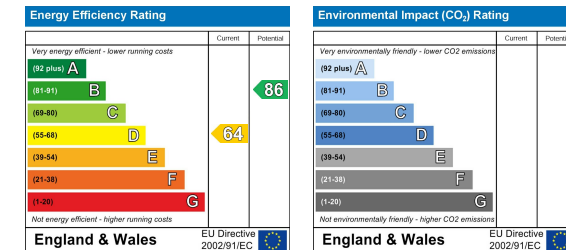
Please contact our Chesterfield Office on 01246 567540 if you wish to arrange a viewing appointment for this property or require further information.

These particulars, whilst believed to be accurate are set out as a general outline only for guidance and do not constitute any part of an offer or contract. Intending purchasers should not rely on them as statements of representation of fact, but must satisfy themselves by inspection or otherwise as to their accuracy. No person in this firm's employment has the authority to make or give any representation or warranty in respect of the property.

Area Map



Energy Efficiency Graph



131 Chatsworth Road, Chesterfield, Derbyshire, S40 2AP
 T: 01246 567540



E: info@dalesandpeaks.co.uk
 www.dalesandpeaks.co.uk